



Arts Club Tour 2024



Silversea Expedition Cruise in Antarctica*

10 Day Ocean Cruise Puerto Williams to Puerto Williams

November 27, 2024 – December 9, 2024 (13 days)



Enjoy the adventure of a lifetime at the bottom of the world. From traversing the mythic Drake Passage to setting foot on the white continent itself with its abundance of wildlife that lives unaware and unafraid of you, you will enjoy what few people have experienced. Sailing from Puerto Williams, Chile, you will discover the majesty of Antarctica on the lovely Silver Cloud, an expedition cruise in luxury.

* *Dates and itinerary subject to change.*



Day 1: Wednesday, November 27, 2024: Depart Vancouver for an overnight flight to Santiago, Chile

Day 2: Thursday, November 28, 2024: Arrive Santiago, Chile

After arriving in Santiago, enjoy an included transfer to the Mandarin Oriental Santiago



Day 3: Friday, November 29, 2024: Puerto Williams, Chile

After an included transfer to the Santiago airport and flying to Puerto Williams, enjoy the included transfer to the pier and the Silver Cloud. Puerto Williams, with a population of only some 2500 residents, is the southernmost city in the world and is on Navarino Island on the southern shores of the Beagle Channel. The surrounding scenery is magnificent with wild, windswept snow dusted mountains rising above the tree line. The city itself has the dramatic backdrop called *Dientes de Navarino* (the *Teeth of Navarino*), which rival the famous Torres del Paine further to the north. The area was originally used by the Yaghan people who were hunter-gatherers enduring the harsh regional climate, but they could not weather the arrival of Europeans. The current city was established as a naval base in 1953 and honours the British-Chilean naval commander John Williams Wilson of the 16th century. Initially, the naval base served to protect territorial possessions and fishing rights of the area, as well as offering logistical support to Antarctic base, but more recently it has become a departure point for scientific and tourism trips to the Antarctic region. Puerto Williams offers a quiet relaxed experience which charms visitors with a small village feel complete with rustic buildings and the homely smell of drifting wood smoke. It's a haven of peace at the end of the world. Silver Cloud departs this evening at 9 p.m.



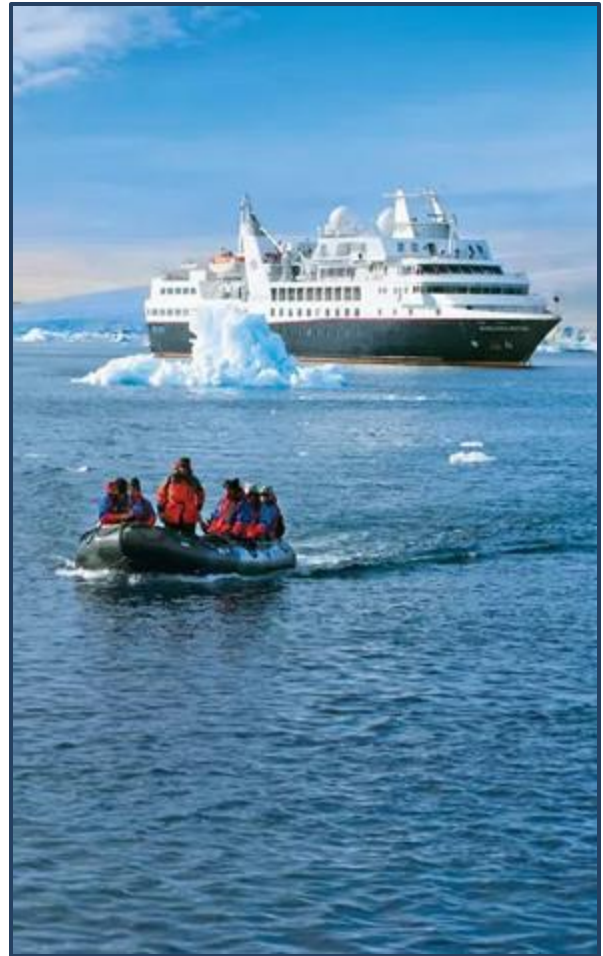
**Days 4-5: Saturday/Sunday, November 30 - December 1, 2024: Drake Passage
International Waters: Days at Sea**

Sailing the legendary Drake Passage is an experience that few people are ever lucky enough to experience. This southern tip of the Americas already feels like a wild enough environment, but watching the distant cliffs of the peninsula, known as *the End of the World*, fade into the horizon is a sensation that is equal parts epic, eerie and magical. You are setting sail, slowly dropping off the bottom of the map from Cape Horn and voyaging on an expedition down into the icy underworld of Antarctica. Drake Passage is an extraordinary voyage of romantic ocean faring legend as you head to Antarctica's icy realm. If the journey across Drake Passage sounds daunting, don't worry: even in rough seas you are never alone and often will be accompanied on this spine-tingling adventure by soaring albatrosses and maybe even a protective pod of humpbacks and hourglass dolphins or two. On arrival, skyscraper sized icebergs salute you, as you traverse the waters of this continent where snow and ice dwelling creatures like penguins and whales roam undisturbed. Converging warm and cool ocean currents attract some spectacular animal life to the passage.



Day 6: Monday, December 2, 2024: Antarctic Sound, Antarctica

The Antarctic Sound will be one of your first encounters of this monochrome kingdom located at the northerly tip of the Antarctic Peninsula. The Sound is a raw, sensory assault of imposing iceberg slabs that have broken away from the disintegrating Larsen Ice Shelf. You will come face-to-face with stadium-sized islands of ice and meet the extraordinary birdlife that call this environment home. Watch as colonies of Gentoo penguins hop around and Cape Petrels sweep overhead as the continent's unique wildlife thrives around you. You will have the opportunity to experience this white world by zodiac, kayaking or hiking with the Silversea Expedition teams.



**Day 7 - 9: Tuesday/Wednesday/ Thursday, December 3 - 5, 2024: Antarctic Peninsula
Antarctica**

The Antarctic Peninsula offers a spectacular first taste of the snow-blanketed landscapes and colossal ice sculptures which make up Earth's least-explored continent. Unseen by humans until 1820, the peninsula offers you a thrilling adventure experience of the truly unknown and extraordinary. The peninsula is sprinkled with research bases that are at the frontline of human scientific endeavour studying this unique landscape, its exceptional wildlife and the impact that humans are having on this pristine continent. Visitors here will see cathedral-sized icebergs up close and blue-hued glaciers slowly slipping from imposing locations like Hope Bay. Below the snow covered mountain peaks of the peninsula, you will find thousands of adorable Adélie penguin pairs thriving undisturbed in this unique setting. During your time here you again will have the opportunity to experience this amazing environment by zodiac, kayak or hiking with the Silversea Expedition teams.



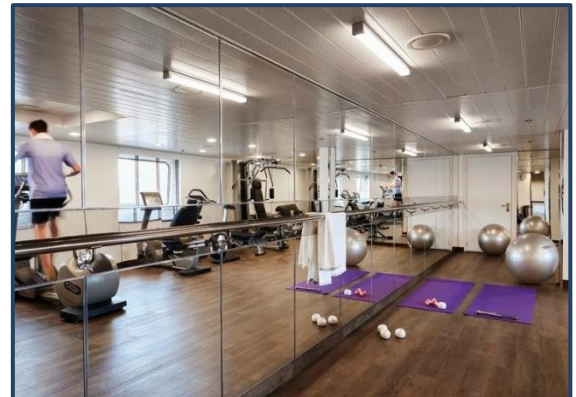
Day 10: Friday, December 6, 2024: South Shetland Islands, Antarctica

The South Shetland Islands fall under the jurisdiction of the Antarctic Treaty and several countries maintain research bases here. With plump elephant seals and crowds of Gentoo, Chinstrap and Adélie penguins also calling the islands home, the islands might even feel a little crowded at times. King George Island is the largest and most hospitable island and hosts the majority of the research stations, some of which are crewed all year round. These islands also offer extraordinary adventure in one of the most remote locations on earth. You will see the triple peaks of Mount Foster towering above the ship as you sail into the core of Deception Island's magnificent collapsed volcano caldera. You can enjoy a zodiac cruise with the Silversea Expedition team, hike the lunar landscapes within and even dip into the warm, geothermally-heated waters of Pendulum Cove. Elephant Island, meanwhile, is written deep into the annals of Antarctic expedition legend as the site where Ernest Shackleton and the stricken crew of the Endurance miraculously survived a harsh Antarctic winter in 1916.



**Day 11 - 12: Saturday/Sunday, December 7 - 8, 2024: Drake Passage
International Waters, Days at Sea
Arrive Puerto Williams, Chile, 10 p.m.**

As you cross the Drake Passage on the return to Puerto Williams, you will have another chance to experience the Passage and its icebergs and wildlife. Then, again, if you've had a very busy excursion to Antarctica, you might just want to sit back and enjoy what the ship has to offer. If you have been so busy that you missed all that the Silver Cloud has to offer, now is the time to enjoy it all.



Day 13: Monday, December 9, 2024: Puerto Williams, Chile

Today after breakfast you will depart from the Silver Cloud and fly back to Santiago where you will spend the remainder of your day at the Mandarin Oriental Santiago until your flight back to Vancouver late in the evening.

Your Suite Aboard Silver Cloud



Suite Features:

Characteristics:

- *Veranda Suite:* 27 m² including veranda
- *Vista Suite:* 22 m² with window
- Sitting area with writing desk
- Standard vanity, separate shower
- Some with full-size bath
- Walk-in wardrobe with personal safe

Media:

- Unlimited standard Wi-Fi
- 1 large flat screen TV with interactive media library
- Direct dial telephone
- Wall mounted USB-C mobile device chargers
- Dual voltage 110/220 outlets

Furniture:

- Queen size bed with pillow menu
- Luxury bed mattresses

Onboard Services:

- Butler service
- Champagne on arrival

Amenities:

- Refrigerator and bar stocked with preferences
- Plush bathrobe with Luxury bath amenities
- Umbrella
- Hair Dryer
- Slippers

All Inclusive Onboard Benefits with the Silver Cloud

Enjoy the 24-hour gourmet dining, butler service, superb entertainment and premium beverages for which Silversea is known

Staff and Services

- Butler services in every suite
- Nearly one crew member for every guest
- 24-hour dining service
- Complimentary transportation into town in most ports

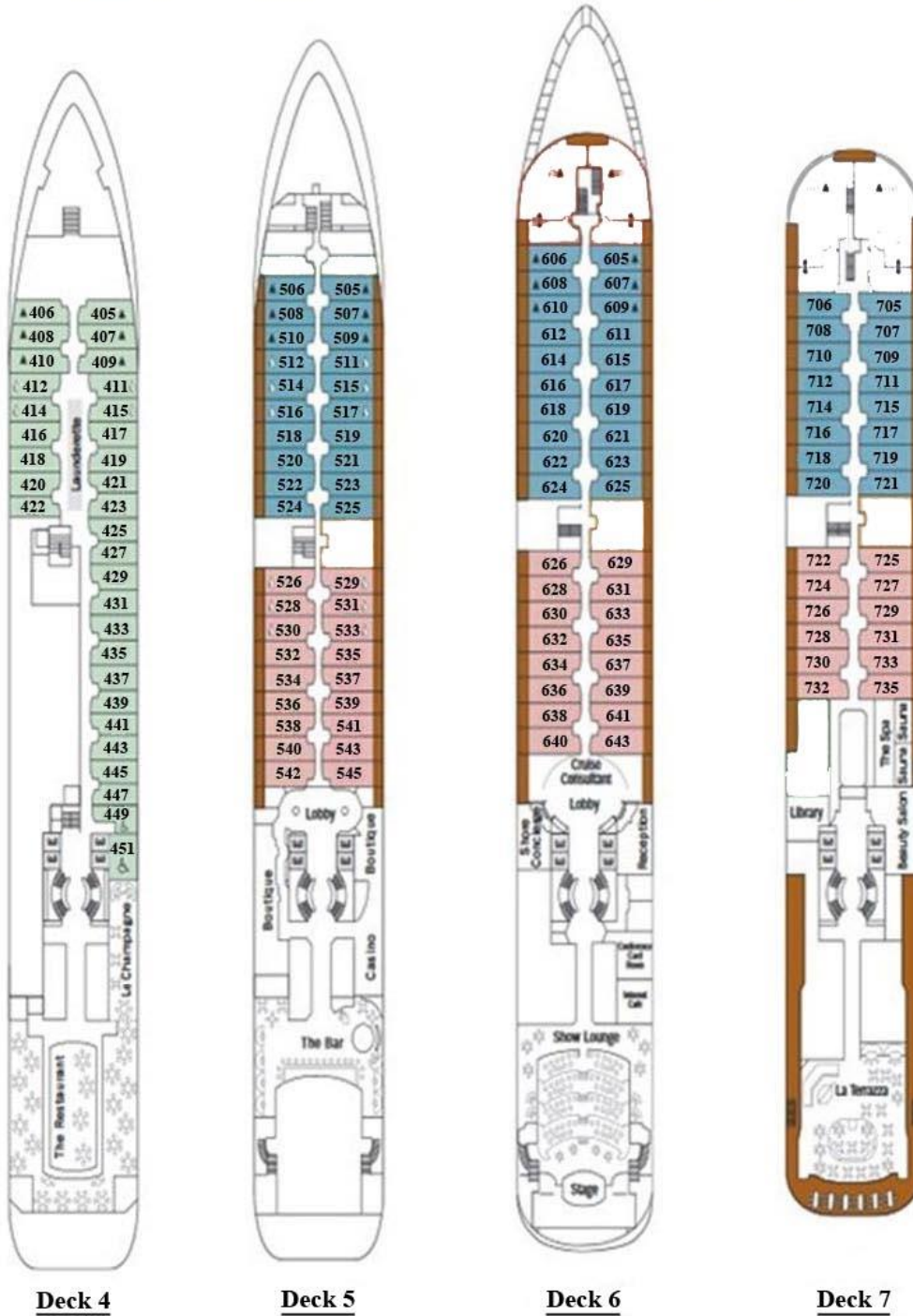
Leisure Onboard

- Choice of restaurants, diverse cuisine, open-seating dining
- Beverages in-suite and throughout the ship, including champagne, select wines and spirits
- Onboard entertainment
- Spa and fitness center

Utilities and Amenities

- Unlimited free Wi-Fi
- Onboard gratuities

Suite Deck Plans



Vista Suite



Verandah Suite



Midship Veranda Suite



Door to Door Cost (subject to change)

Single (from): \$23,000* Cdn

Double Occupancy (per guest): \$17,900* Cdn

Includes:

- + Roundtrip Vancouver to Santiago**
- + Overnight in a 5 Star Santiago Hotel**
- + Roundtrip transfer by private charter
Santiago to Puerto Williams**

*** Larger Suites are available for additional cost.**

This expedition is not suited for individuals with mobility issues. Cancellation and medical insurance are mandatory for this type of expedition.

**This cruise offers a single supplement from 25%,
making it an ideal opportunity
for the single adventurous traveller.**

**Pricing for this Arts Club
Antarctica expedition is available by calling**

Colleen Burke

at 604.644.0036

(Telephone only between 10 a.m. and 4 p.m. Monday to Friday)

or email for further information to

cburke@dt.com



Direct Travel

Consumer Protection BC License

#74718